



43 Mare Street, London, E8

BUTLER & STAG



Stunning one bedroom top floor apartment surrounded by East London favourites Victoria Park, London Fields, Broadway Market and the Regents Canal.



- Stunning One Bedroom Apartment
- Private Balcony
- Moments from Victoria Park and London Fields
- Part Furnished
- Sixth Floor with Lift
- Heating and Hot Water Included
- Excellent Transport Links
- Available from 28th November 2025

Situated on the sixth floor of a modern development, this bright property features an open-plan kitchen/diner and living space with access to a private balcony that runs the width of the apartment and a Juliet balcony with far-reaching views. Further comprising of a double bedroom with fitted wardrobes, a contemporary bathroom and useful storage spaces.

A wonderful benefit of this must-see apartment is that heating and hot water bills are included within the rent.

Ideally located for the cafes, bars, restaurants and boutique shops of both Victoria Park Village and Broadway Market, the Regents Canal and the green spaces of Victoria Park are also just moments away. Nearby transport links include Cambridge Heath and London Fields stations, Bethnal Green underground station and various bus links allowing for swift and direct access towards the City in one direction and trendy Hackney in the other.

Offered part furnished and available from 28th November 2025.

EPC Rating C
Council Tax Band C

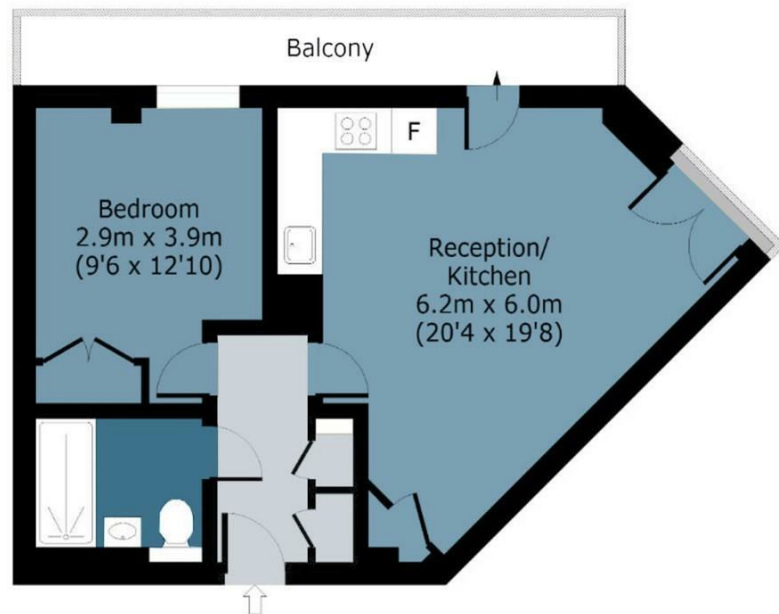




Cordwainer House

Approx. Gross Internal Area 46 Sq M (495 Sq Ft)

BUTLER & STAG



Measurements are approximate and for illustration purposes only. While we do not doubt the accuracy and completeness, we advise you conduct a careful independent assessment of the property to determine monetary value.
© @modephoto.uk www.modephoto.co.uk

IMPORTANT NOTICE - These particulars have been prepared in good faith and they are not intended to constitute part of an offer or contract. We have not performed a structural survey on this property and the services, appliances and specific fittings have not been tested. All photographs, measurements, floor plans and distances referred to are given as a guide and should not be relied upon.

BUTLER & STAG

☎ 020 8102 1236

🏠 508 Roman Road, Bow, London, E3 5LU

✉ bow@butlerandstag.com

www.butlerandstag.uk